

PUSH & GO multi-adapter assembly instruction

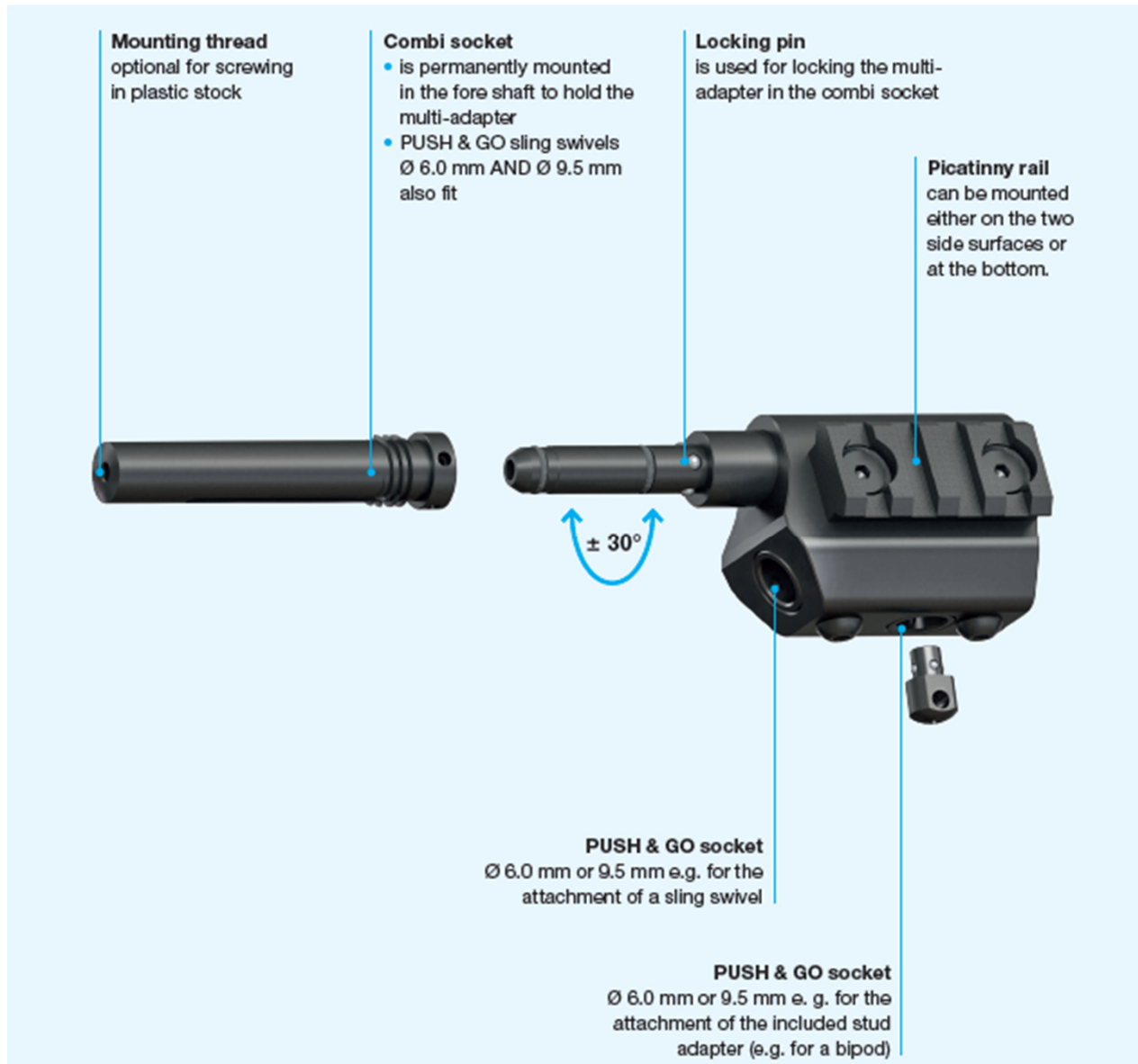
for wooden stock



These instructions are intended as an assistance. Special shaft shapes may require a different procedure.

PUSH & GO multi-adapter

Product overview



Assembly instruction

Required tools



- box column drill
- drill Ø 6 mm
- drill Ø 8,5 mm
- drill Ø 12,1 mm
- drill Ø 12,75 mm
- piloted counterbore M8 (15,0 x 8,4 mm)
- caliper
- punch
- mallet
- grease
- 2 components glue

Assembly instruction

Requirements for the wooden stock



PLEASE BE SURE TO NOTE!

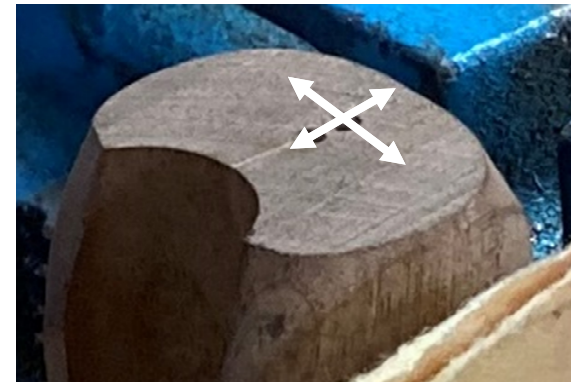
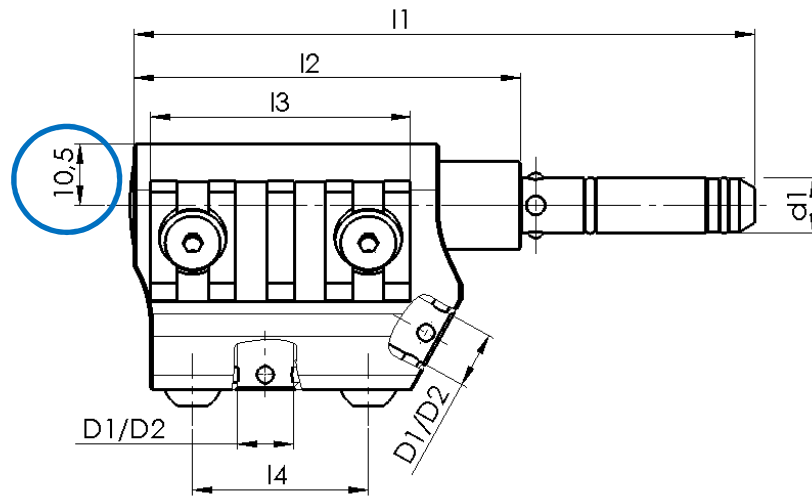
The distance from the barrel bottom to the bore centre:

→ **at least 11 mm**

Place requirement for the socket
(\varnothing 15 mm)

→ at least 24 x 24 mm

(incl. remaining material at least 3,5 mm per side)



Assembly instruction

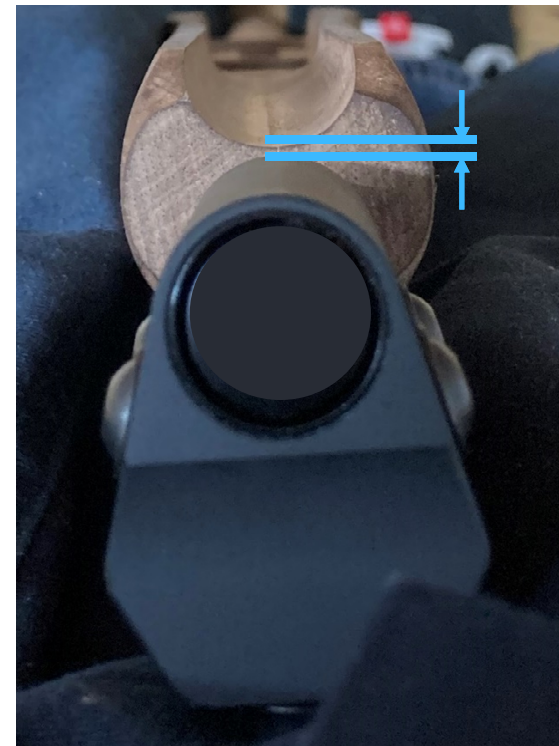
Wooden stock



1. Mark the position and punch-mark the centre to prevent the drill from running out of place.

Note for mark the centre point:

It is **essential** to observe the **distance** between the multi-adapter and the barrel when installed – **at least 0.5 mm**



Assembly instruction

Wooden stock



2. Clamp the weapon securely in the pillar drilling machine and align it.



Assembly instruction

Wooden stock



3. Prebore

Diameter: \varnothing 6 mm

Bore depth: approx. 80 mm



4. Drill out

Diameter: \varnothing 8,5 mm

Bore depth: approx. 25 mm



Assembly instruction

Wooden stock



5. Decline with piloted counterbore
Diameter: \varnothing M8 - 15,0 x 8,4 mm
Sinking depth: 5,1 mm



Assembly instruction

Wooden stock



- 6. Drill out
Diameter: \varnothing 12,1 mm
Bore depth: at least 74 mm



- 7. Drill out
Diameter: \varnothing 12,75 mm
Bore depth: 18 mm



Assembly instruction

Wooden stock



8. Starting position for screwing the combi socket into the prepared bore.



9. Insert the multi-adapter into the socket.
10. Apply grease on the male thread
11. Screw the socket into the bore.



Assembly instruction

Wooden stock



Note:

Cut the thread (with socket) by turning back half a turn after each turn.

12. Apply 2 components glue on the male thread.



2 components glue



Assembly instruction

Wooden stock



13. Screw the socket into the bore.



14. Screw in the combi-socket until the upper edge is flush with the shaft and the multi-adapter is centred.



Assembly instruction

Contact Erwin Halder KG



If you have any questions about this assembly instruction, please contact:

Robert Mitteneder	Björn Stöckle
+49 (0) 7392 – 7009 264	+49 (0) 7392 – 7009 198
mitteneder.robert@halder.de	stoeckle.bjoern@halder.de